



2025 SCOTT
ADDICT RC MANUAL

CONTENT

THE ADDICT RC SHOULD BE ADJUSTED EXACTLY TO THE RIDER FOR MAXIMUM SAFETY AND RIDEABILITY.

Please contact your authorized SCOTT dealer for advice in order to avoid technical problems or any harm.

GEOMETRY & TECHNICAL DATA	03
ROTOR SIZE	04
SEATPOST CLAMP	05
FORK BRAKE CABLE ROUTING	06
REAR BRAKE CABLE ROUTING	07
COMBO HANDLEBAR CABLE ROUTING	08
SHIMANO Di2 CABLE ROUTING	09
GENERAL SPARE PARTS	11
MANUFACTURE'S GUARANTEE	16

LEGEND



TORQUE REQUIRED



TASK DIFFICULTY



TORX TOOL SIZE



HEX TOOL SIZE



TORQUE AMOUNT



GREASE REQUIRED



NO GREASE



CARBON GREASE

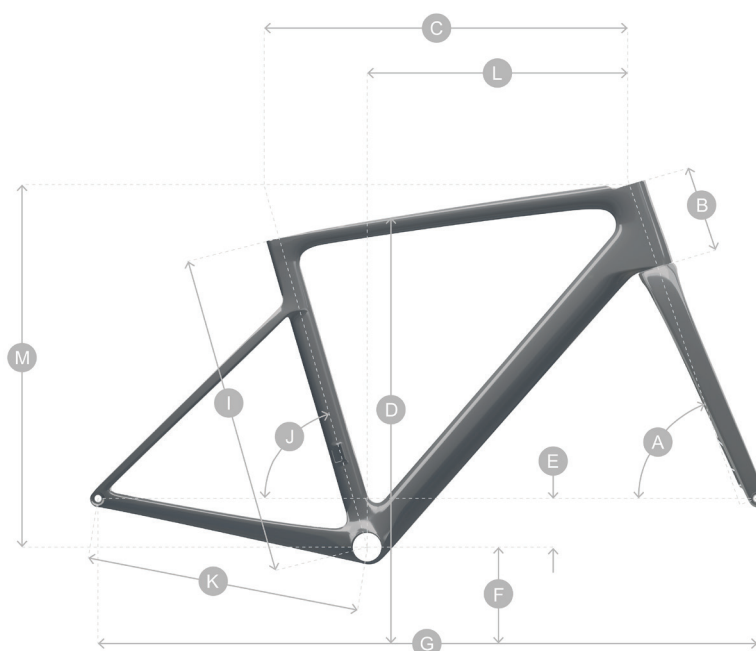


THREADLOC



BEARING FIT

GEOMETRY & TECHNICAL DATA

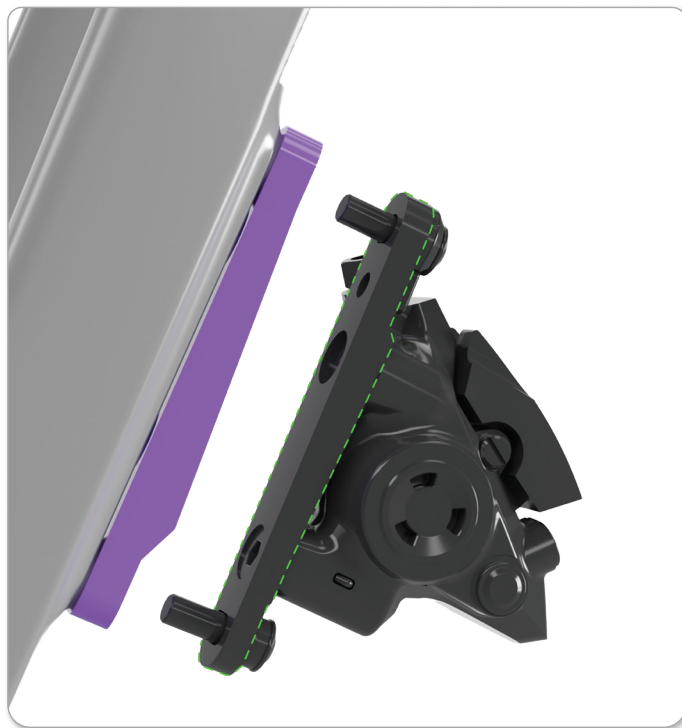


SEATPOST	mm	Addict RC specific	FRONT AXLE	mm	12 x 100
SEATPOST CLAMP	mm	Addict RC specific	MAX TYRE WIDTH	mm	34
FORK STEERER	in	1 1/4 - 27.2mm	BB HOUSING	mm	41 x 86.5
HEADSET	mm	IS44/35 - IS52/42	MAX ROTOR FRONT	mm	160 / 180
REAR AXLE	mm	12 x 142	MAX ROTOR REAR	mm	140 / 160

2025 ADDICT RC			47	49	52	54	56	58	61
A	Head tube angle	°	71,3	71,8	72,3	72,8	73,4	73,6	73,8
B	Head tube length	mm	90	100	113	130	150	170	190
C	Top tube horizontal	mm	519	528	542	555	572	586	602
D	standover height	mm	725	740	758	778	799	820	840
E	BB offset	mm	74	74	73	72	72	72	72
F	BB height	mm	270,5	270,5	271,5	272,5	272,5	272,5	272,5
G	Wheelbase	mm	977	983	989	991	999	1006	1015
I	BB center to TST	mm	420	440	460	480	500	520	540
J	Seat angle	°	74,5	74,5	74	73,6	73,3	72,9	72,5
K	Chainstay	mm	410	410	410	410	410	410	410
L	Reach	mm	379	386	392	395	403	406	411
M	Stack	mm	501	513	526	543	565	584	604
	Fork Rake	mm	47			44			
	Stem Length	mm	80	90	100	110	110	120	120

ADDICT

ROTOR SIZE (illustration only)

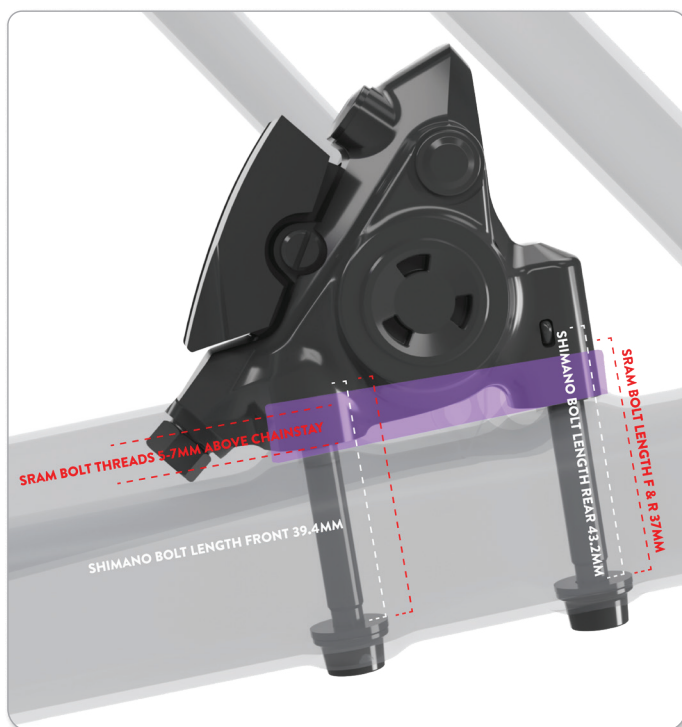


Fork brake rotor min. 180mm
Shimano **Y8N230000** adaptor
(purple illustration)

Fork brake rotor Max. 160mm
Shimano
(green dashed illustration)

Sram flat mount adaptor:
00.5318.018.000

*torque bolts to brake manufacturers recommendation



Rear brake rotor min. 140mm
Shimano / Sram flat mount
NO ADAPTOR directly mounted

Rear brake rotor Max. 160mm
Shimano **FLATMOUNT R160D/D**
(+20MM) (purple illustration)

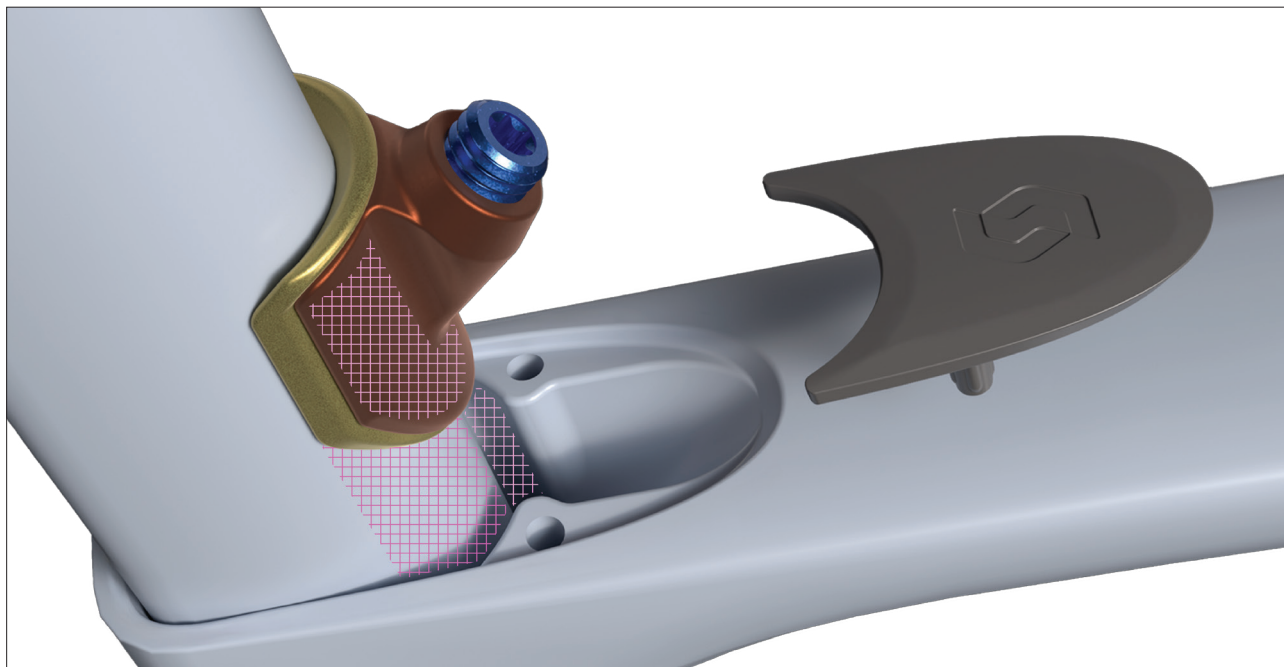
Sram 160 flat mount adaptor:
00.5318.018.001

*torque bolts to brake manufacturers recommendation

*bolt lengths the same for 140mm & 160mm rotors

ADDICT

SEATPOST CLAMP (illustration only)



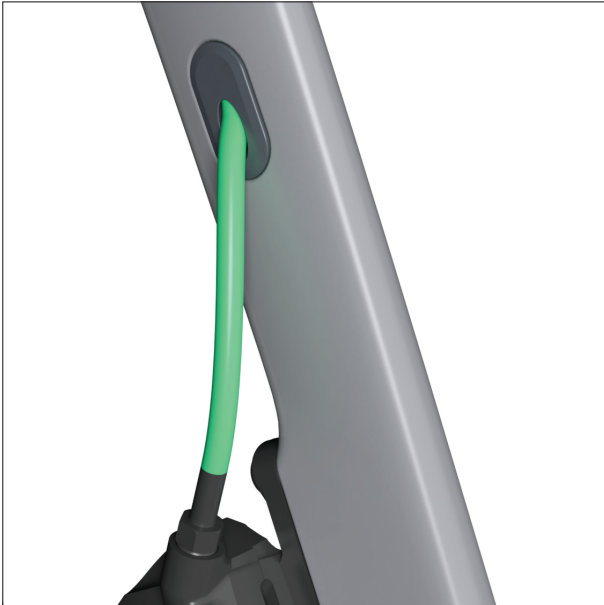
The clamp is one piece and will only be available as a complete unit (spare part section). The profile will incorporate a non slip profile to stop the clamp from sliding down inside the seat tube after the seatpost has been installed.

Use carbon compound where indicated.

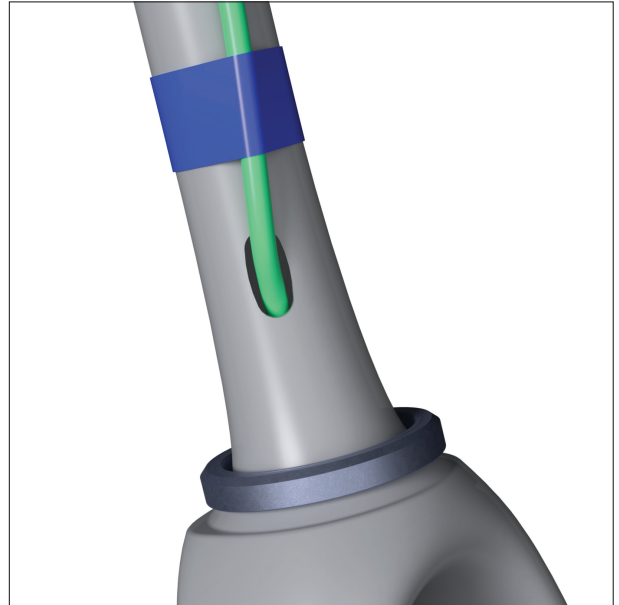


ADDICT

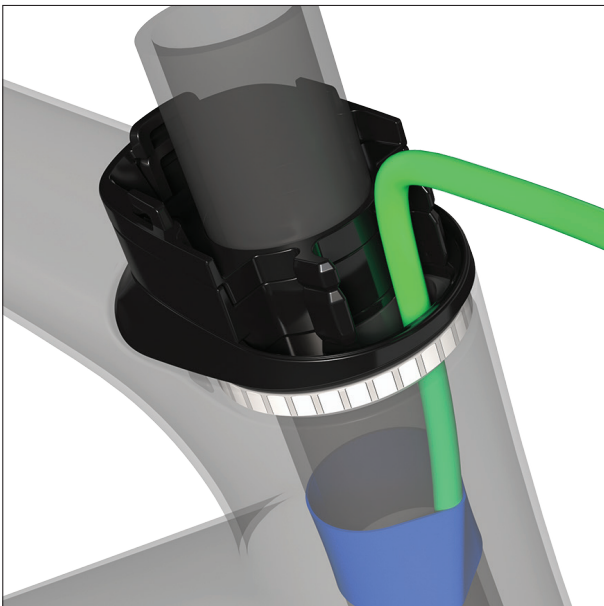
FORK BRAKE CABLE ROUTING (illustration only)


01


Place the rubber grommet into the cable entry hole on the left fork leg. Install the bottom headset bearing on the fork steerer. Route the front brake cable through the rubber grommet and into the fork leg. Exit the cable through the hole in the fork steerer shaft. Tighten the brake caliper bolts to fix the cable length.


02


Place the lower headset bearing into position, grease. Tape the brake cable to the steerer shaft by wrapping it with electrical tape.


03

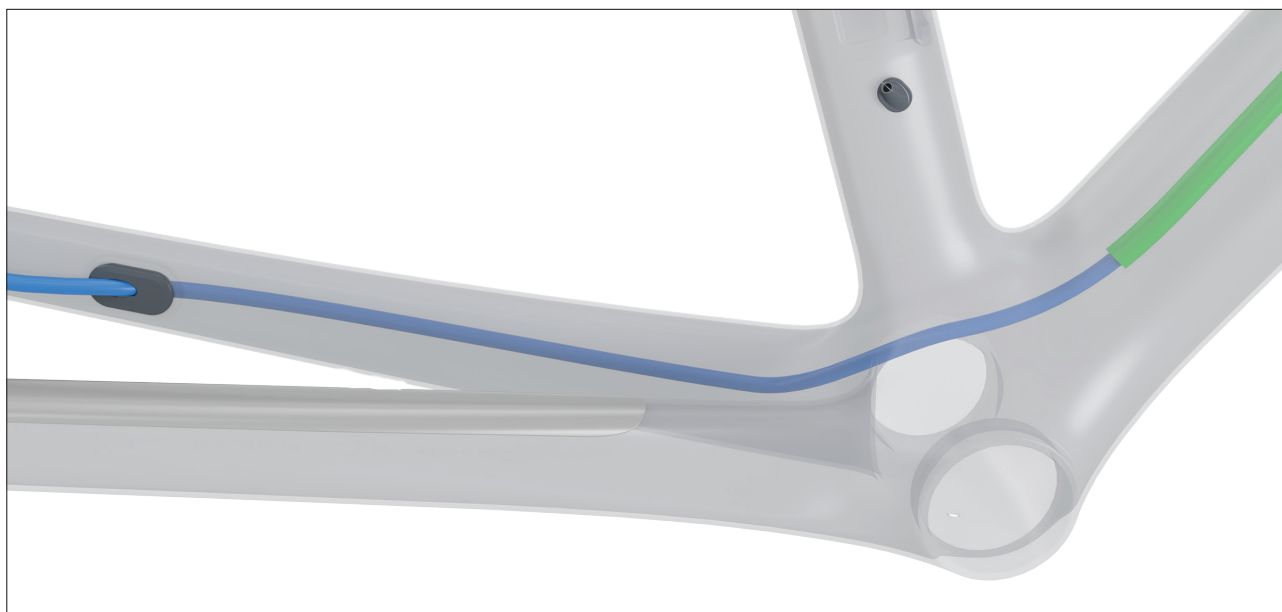

Put the fork into the frame and install the top headset bearing and headset sealing. Then install the compression ring and the top cap. The cable will exit on the non-driveside of the top cap.


04


Insert the front brake cable into the cable slot in the stem area. Exit the cable through the hole on the non-driveside of the handlebar. Driveside for UK.

ADDICT

REAR BRAKE CABLE ROUTING (illustration only)



01



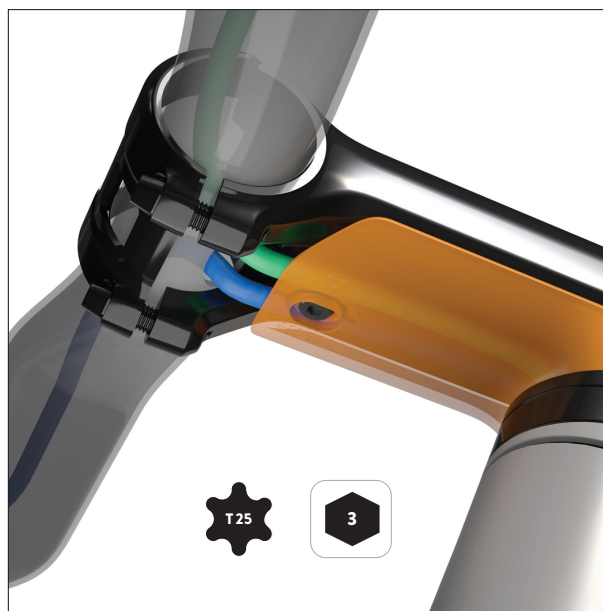
Place the rubber grommet into the cable entry hole on the left chain stay. Route the rear brake cable (blue) through the chainstay and over and past the bottom bracket. Install a foam protection tube over the rear brake cable inside the frame (do not overlap the foam into the headtube area).



02



Guide the rear brake cable (blue) around the driveside of the fork steerer, exit the cable on the driveside of the top cap. Exit on the drive side of the bar. Route the rear brake around the non-driveside of the steerer for the UK.



03



Fix the cable cover to the stem.

Torque: **2Nm**

Adjust the handlebar and tighten the stem and steerer bolts, Torque: **5Nm**

ADDICT

COMBO HANDLEBAR CABLE ROUTING (illustration only)



04 The combo handlebar cable routing will follow the same format as the normal stem and handlebar just without the cable cover. The routing stays the same internally.

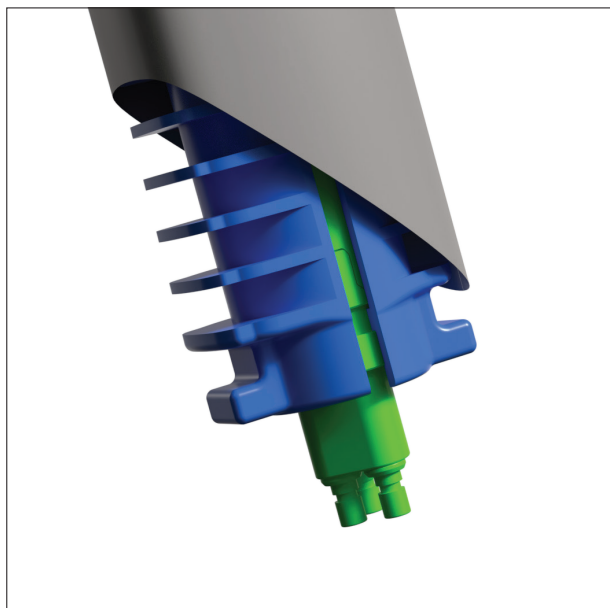


Steerer clamp. Torque: **4Nm**



ADDICT

SHIMANO Di2 CABLE ROUTING (illustration only)



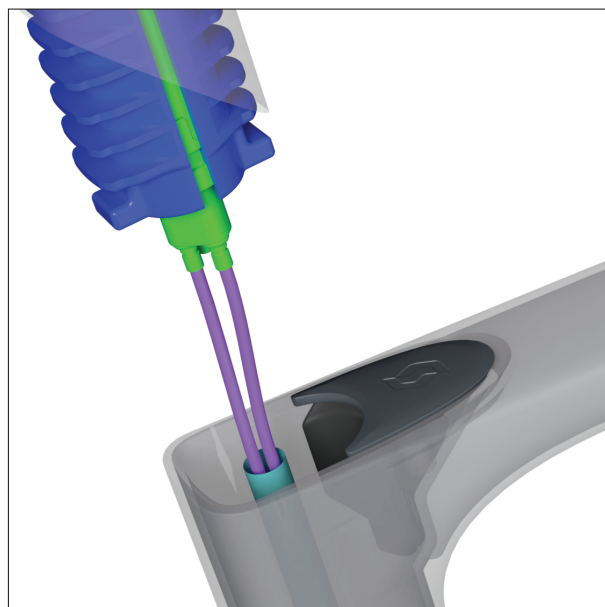
- 01** Fix the rubber battery holder to the Di2 battery. Insert the battery into the seat post together with the rubber battery holder. Make sure the battery holder is still accessible.



- 02** Connect the front derailleur cable to one of the outside cable ports of the battery. Route the cable through the cable protection tube. Insert the cable together with the cable protection tube into the seat tube.



- 03** Exit the cable through the cable routing hole below the front derailleur mount. Install the rubber grommet into the cable routing hole. Connect the cable to the front derailleur and install the front derailleur to the frame (always use the carbon mounting plate).



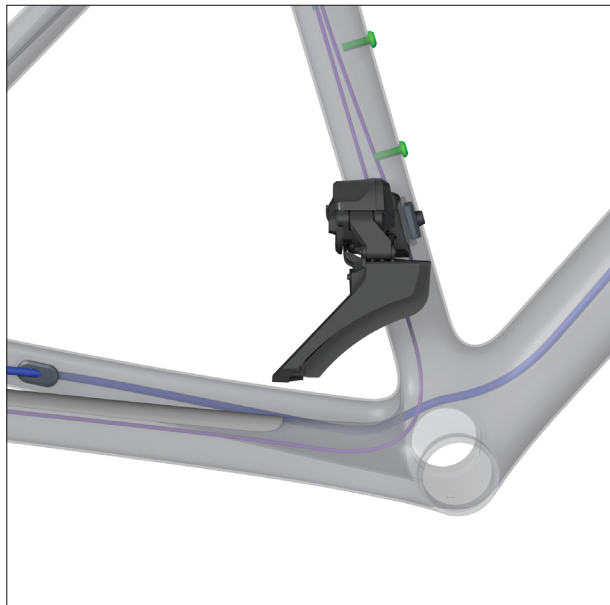
- 04** Connect the rear derailleur cable to the central port of the battery. Route the cable through the cable protection tube into the seat tube.



*torque FD bolt to FD manufacturers recommendation

ADDICT

SHIMANO Di2 CABLE ROUTING (illustration only)

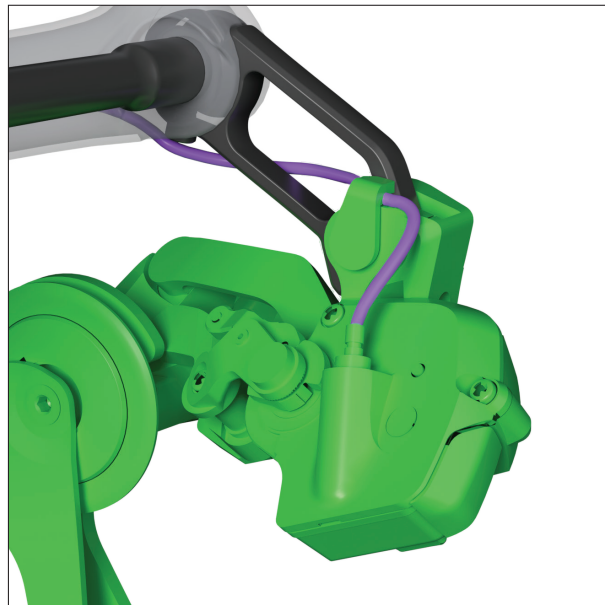


05

Route the cable into the right chain stay.



The cable shall pass the bottom bracket area on top of the bottom bracket.



06

Exit the right chain stay through the gap below the rear derailleur hanger.

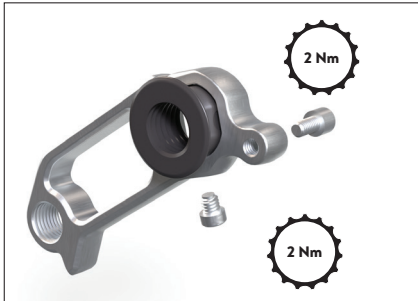


Route the cable through the hole in the rear derailleur hanger and fix it to the rear derailleur with the plastic clip.

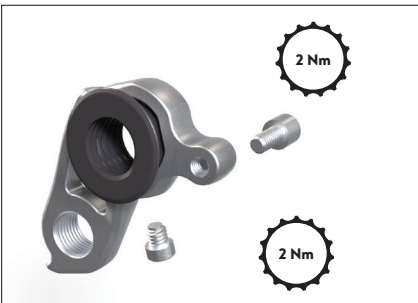
Connect the rear derailleur cable to the rear derailleur.

ADDICT

GENERAL SPARE PARTS (illustration only)



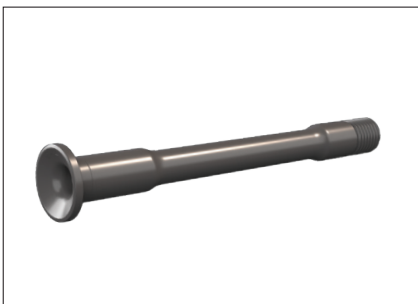
424165 SCO DROPOUT ADDICT RC DIRECT 25



424166 SCO DROPOUT ADDICT RC STANDARD 25



424161 SCO AXLE ADDICT RC R 25



424160 SCO AXLE ADDICT RC F 25



424158 SCO SEATPOST CLAMP ADDICT RC 25



ADDICT

GENERAL SPARE PARTS (illustration only)



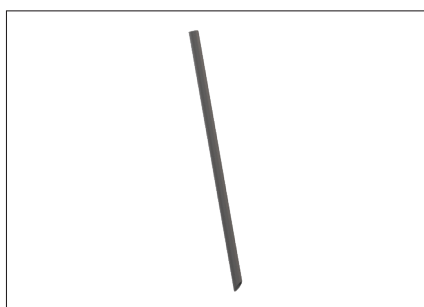
424156 SCO HEADSET EXPANDER ADDICT RC 25



424154 SCO STEM SPACER/TOP CAP KIT ADDICT RC 25



424155 SCO HEADSET TOP CAP ADDICT RC ULT 25
 424400 SCO HEADSET TOP CAP ADDICT RC 20/30 BLK 25
 424401 SCO HEADSET TOP CAP ADDICT RC 30 Grey 25
 424396 SCO HEADSET TOP CAP ADDICT RC 10 YEL 25
 424399 SCO HEADSET TOP CAP ADDICT RC 20 Pink 25
 424397 SCO HEADSET TOP CAP ADDICT RC 30 Pink 25
 424394 SCO HEADSET TOP CAP ADDICT RC Pro 25



424162 SCO SEATTUBE CABLE TUBE DI2 ADDICT RC 25



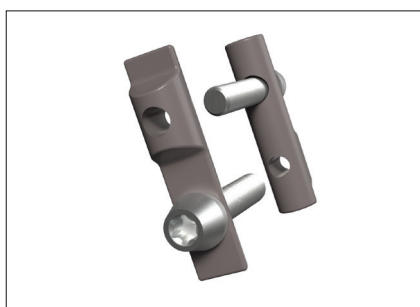
424163 SCO BATTERY HOLDER DI2 ADDICT RC25

ADDICT

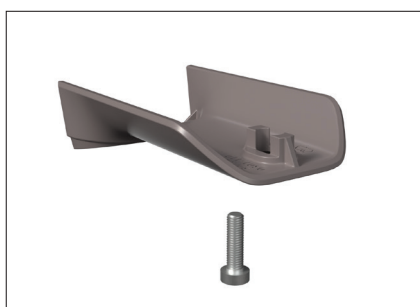
GENERAL SPARE PARTS (illustration only)



424164 SCO CABLE GUIDE KIT ADDICT RC 25



424157 SCO STEM HARDWARE KIT CRESTON IC SL 25



424153 SCO STEM CABLE COVER ADDICT RC 25



423441 SYN STEM ST-R100-AL (handlebar clamp and steerer clamp torque)



423445 SYN SEATPOST SP-R101-CF 15MM OFF

ADDICT

GENERAL SPARE PARTS (illustration only)



423444 SYN S.POST SP-R101-CF 0MM OFF



423440 SYN HANDLEBAR HB-R100-AL



423439 SYN HANDLEBAR HB-R100-CF



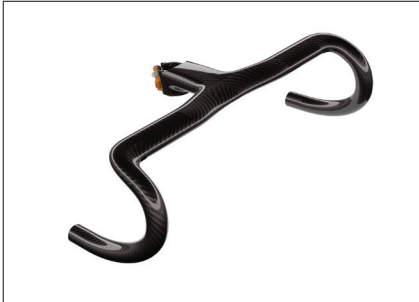
423437 SYN COCKPIT IC-R100-SL 420MM



423436 SYN COCKPIT IC-R100-SL 400MM

ADDICT

GENERAL SPARE PARTS (illustration only)



423435 SYN COCKPIT IC-R100-SL 380MM



423434 SYN COCKPIT IC-R100-SL 360MM



423432 SYN REAR LIGHT CAMPBELL 20 D IL



426236 SCO FD ALLOY WASHER ADDICT RC 25

MANUFACTURER'S GUARANTEE,

When purchasing a new SCOTT bicycle from an authorized SCOTT dealer, SCOTT grants a manufacturer's guarantee subject to the following provisions.

CONDITIONS

The manufacturer's guarantee is only granted to the first-time buyer of a SCOTT bicycle who has purchased it from an authorized SCOTT dealer. The manufacturer's guarantee only applies if the bicycle is registered to the first buyer at www.scott-sports.com within one year of purchase.

DURATION

The manufacturer's guarantee is granted from the date of purchase for a period of five years on bicycle frames and rear ends. The guarantee period is reduced to three years, if the SCOTT bicycle is not serviced at least once a year by an authorized SCOTT dealer. Maintenance services must be carried out in accordance with the maintenance instructions in the SCOTT manual and must be confirmed there by the stamp and signature of the authorized SCOTT dealer.

For frames and rear ends of Category 5 bicycle models and for rigid forks manufactured by SCOTT, the duration of the manufacturer's guarantee is limited to two years.

If a defect on the SCOTT bicycle is remedied within the scope of a manufacturer's guarantee or a warranty claim, the duration of the manufacturer's guarantee is not extended. The manufacturer's guarantee ends, when the first-time buyer transfers ownership of the SCOTT bicycle to a third person.

ASSERTION

The manufacturer's guarantee is provided by SCOTT Sports SA, Route du Crochet 11, 1762 Givisiez, Switzerland. The buyer must inspect the SCOTT bicycle immediately after purchase and notify his authorized SCOTT dealer at once in writing of any obvious defects. Hidden defects must be reported immediately after their discovery. In the event of a guarantee claim, the SCOTT bicycle must be handed over to an authorized SCOTT dealer. The latter will contact SCOTT to remedy the defect. The assertion of a guarantee claim always requires the presentation of the original proof of purchase as well as the proof of maintenance service in the SCOTT manual.

Performance of SCOTT in the event of a guarantee claim

In the event of a guarantee claim, SCOTT will, at its own discretion, repair the defect or replace the defective product with a product of similar quality, whereby colour and model deviations are possible. If a repair or replacement is not possible, a purchase price refund will be made taking into account previous use. SCOTT is entitled to commission third parties to remedy the defect.

LIMITATIONS

The manufacturer's guarantee applies exclusively to frames, swingarms and rigid forks of SCOTT bicycles. Bicycle components are excluded from this manufacturer's guarantee.

The manufacturer's guarantee does not apply to normal wear and tear, damage caused by accidents or other excessive force on the SCOTT bicycle, corrosion, improper maintenance, incorrect assembly and assembly of unsuitable components or accessories as well as cosmetic defects, for example in the varnish.

The manufacturer's guarantee does not apply to SCOTT bicycles that have been used in a rental shop.

MISCELLANEOUS

These manufacturer's guarantee provisions apply to all SCOTT bicycles as of model year 2023. Statutory warranty rights of the buyer and guarantees of component manufacturers (Shimano, SRAM etc.) remain unaffected by this manufacturer's guarantee. The place of jurisdiction for all disputes in connection with this manufacturer's guarantee is Freiburg, Switzerland. This manufacturer's guarantee is subject to Swiss law to the exclusion of all legislation that refers to foreign law.

SCOTT		BIKE WARRANTY PERIODS				
		Year 1	Year 2	Year 3	Year 4	Year 5
SCOTT Bikes						
Category 5 Bikes						
Regular Warranty Period						
Option for prolongation according to maintenance intervals shown in manual attached to bikes						



All rights reserved
© 2024 SCOTT Sports SA

Distribution:
SSG (Europe) Distribution Center SA
P.E.D. Zone C1
Rue du Kiell 60
6790 Aubange
Belgium

SCOTT Sports SA
Route du Crochet 11
1762 Givisiez
Switzerland

webmaster.marketing@scott-sports.com
www.scott-sports.com

